

CNX-BB

When paired with our Compact Series Flat Panel User Terminals, the CNX-BB is the optimal solution for installations that require a single plug and play RJ45 GigE connection. The small form factor makes it the ideal solution for space constrained locations.



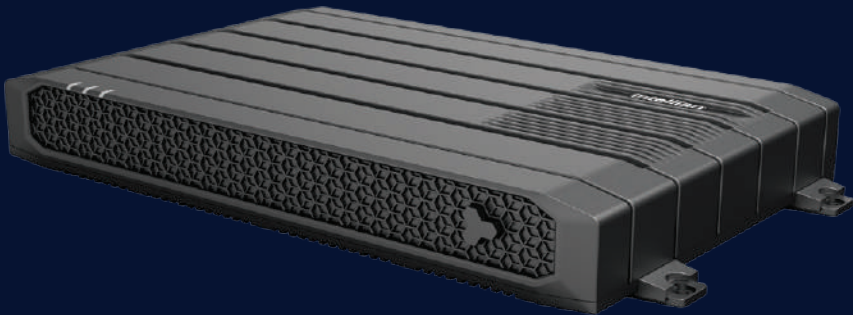
CNX-WIFI

Intellian’s CNX-WIFI offers a suite of networking capabilities and an embedded WiFi-6 AP that are easily configured via a user friendly LUI or Intellian’s Mobile App. The CNX-WIFI is compatible with both the Compact and Enterprise Series Flat Panel User Terminals.



CNX-MOBILITY

Intellian’s CNX-Mobility is the most ruggedized IP56 rated solution in the portfolio, ensuring connectivity even in the most demanding enviornments. The CNX-Mobility is the ideal solution for COTP and COTM applications for the Compact and Enterprise Series, featuring DC (12-24V) and AC (100-240V) power supply options.



CNX-RACK

Intellian’s CNX-Rack is the ideal solution for Maritime, Telco and Enterprise customers. The CNX-Rack natively supports dual antenna configuration, delivering blockage mitigation support via P-P feature. Showcasing a 1RU form factor, the CNX-Rack is easily integrated with other telecom equipment and is available in both AC (100 - 240V) and DC (-48V) variants.



Intellian Pt.# (& Power Options)	PP-T1A0-250 (w/ 250W AC PSA) PP-T1A0-DC (w/ 480W DC-DC Converter)
Form Factor	Desktop & Keyhole Mount Slots
Dimensions	13 x 12 x 4 cm (5.1” x 4.7” x 1.6”)
Weight	0.25 kg (0.55 lb)
Operating Temp	0 °C to +40 °C (+32 °F to +104 °F)
Ingress	N/A
Interface	1-port GigE RJ45 F-Type Port
Compatibility	Compact Series

Intellian Pt.# (& Power Options)	PP-T1A1-250 (w/ 250W AC PSA) PP-T1A1-450 (w/ 450W AC PSA) PP-T1A1-DC (w/ 480W DC-DC Converter)
Form Factor	Desktop & Wall Mount
Dimensions	21 x 17 x 8 cm (8.2” x 6.7” x 3.1”)
Weight	0.6 kg (1.3 lb)
Operating Temp	0 °C to +40 °C (+32 °F to +104 °F)
Ingress	IP44
Interface	WiFi-6 4-port GigE RJ45 F-Type Port
Compatibility	Compact Series & Enterprise Series

Intellian Pt.# (& Power Options)	PP-T2D1-DC (w/ 480W DC-DC Converter) PP-T2D1-450A (w/ 450W AC PSA)
Form Factor	Integrated tabs & 19” Rack Mount Kit
Dimensions	30 x 20 x 4 cm (11.8” x 7.9” x 1.6”)
Weight	1.5 kg (3.3 lb)
Operating Temp	-25 °C to +55 °C (-13 °F to +131 °F)
Ingress	IP56
Interface	WiFi-6 4-port GigE RJ45 F-Type Port
Compatibility	Compact Series & Enterprise Series

Intellian Pt.# (& Power Options)	OP-T2C0 (450W Dual AC PDM) OP-T2B0 (450W Dual -48VDC PDM)
Form Factor	Rackmount
Dimensions	44.2 x 25 x 4.4 cm (19” x 1 RU chassis)
Weight	6.3 kg (13.9 lb)
Operating Temp	-25 °C to +55 °C (-13 °F to +131 °F)
Ingress	IP31
Interface	8-port GigE RJ45 WiFi Dongle F-Type Port
Compatibility	Compact Series & Enterprise Series

Intellian

INTELLIAN'S FLAT PANEL SERIES

A WHOLE NEW WORLD OF LOW PROFILE, HIGH PERFORMANCE CONNECTIVITY



CONTACT US
SALES@INTELLIANTECH.COM

Intellian

CNX PORTFOLIO

Intellian's Customer Network Exchange (CNX) units are a critical component of the user terminal installation, providing both the power and data connectivity to the Flat Panel over single IFL, and the connectivity to customer equipment and networks. CNX variants are offered for specific deployment scenarios including Land Fixed, Maritime and Land Mobile.

